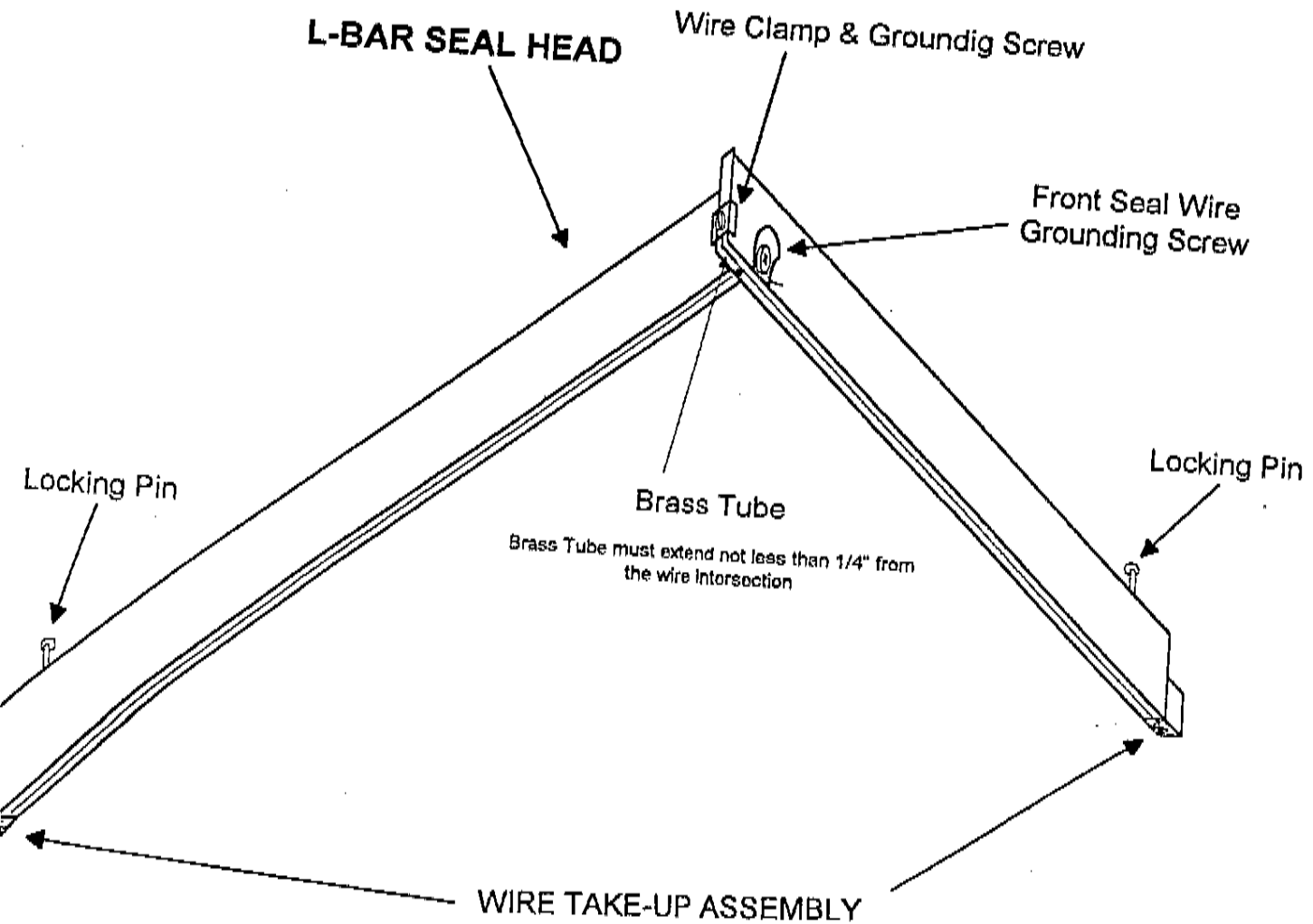


SEAL-A-TREIT



To Replace a Seal Wire:

1. Push in wire take-up assembly and secure with lock pin.
2. Remove old wire.
3. Install new wire. Make sure you install the brass tube on the cross wire as shown in drawing. Failure to do that will shorten the service life of the wire and cause poor seals.
4. Apply tension by pulling at the end of wire with pliers. Secure it with the grounding clamp. Cut-off excess wire.
5. Release lock-pins.